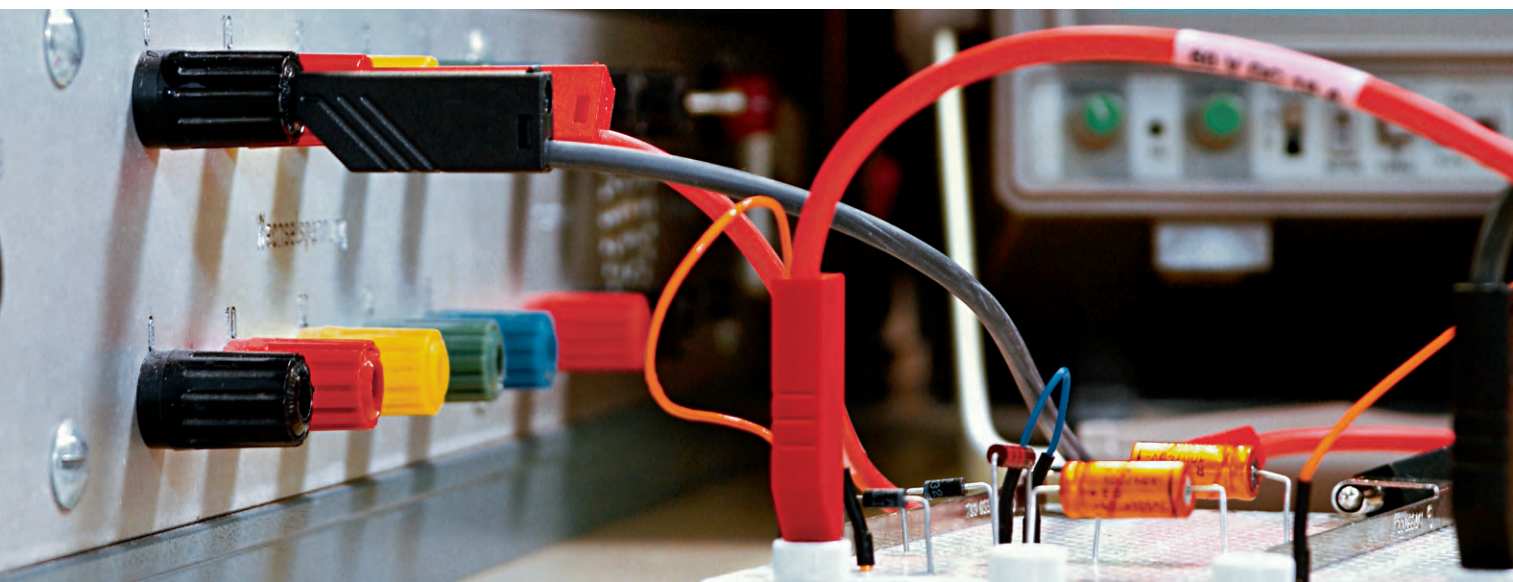


Test Jacks

Quick mounting and durability are 2 attributes that characterize Altech test jacks and sockets. They can be used as connecting sockets in power supplies, connecting points in service devices or test jacks in test & measurement applications and devices.

- Large variety in colors
- Tin/ nickel/ gold plating
- Screw-in and press-in versions
- Regular and spring loaded jacks/ sockets
- Up to 1000V CAT III voltage rating



Test Jacks 2 mm System



Type **MKU 1**
2mm mini Adapter, tin plated Copper-Beryllium contact spring with solder terminal. Flexible, shatter-proof insulation sleeve, max. connecting lead diameter 2mm.

Pin Diameter 2 mm

- PART NO. / Housing color**
- 930320100
 - 930320101
 - 930320102
 - 930320103
 - 930320104
 - 930320107



MBI 1 / MBI 1 Au
2mm panel mount mini test jack, tin/ gold plated Copper-Beryllium contact spring with solder terminal. Installation in equipment chassis and switch panels, max. wall thickness 5mm.

- 2 mm
- | | |
|----------------------|--------------------|
| Nickel Plated | Gold Plated |
| ● 930308100 | ● 930308700 |
| ● 930308101 | ● 930308701 |
| ● 930308102 | ● 930308702 |
| ● 930308103 | ● 930308703 |
| ● 930308104 | ● 930308704 |
| ● 930308106 | ● 930308706 |

Technical Data

Contact Type spring-loaded jack Ø 2 mm
 Connection Type solder terminal max Ø 2 mm
 Voltage Rating 30 VAC / 60 VDC
 Measurement Category (IEC61010) CAT I
 Current Rating* 6 A
 Contact Resistance 6 mOhm
 Mounting Type -

Material Specifications

Jack Body -
 Contact Spring tin plated copper-beryllium
 Housing PVC-P

Environmental Conditions

Temperature Range -20°C to +60 °C (-4 to 140°F)

Flamability Rating

Housing -

spring-loaded jack Ø 2 mm

solder terminal
 30 VAC / 60 VDC
 CAT I
 6 A
 6 mOhm
 screw thread M5

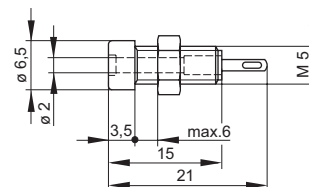
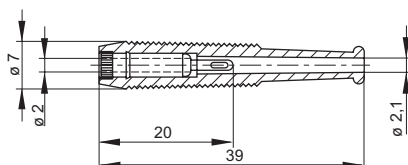
-
 tin plated copper-beryllium | gold plated copper-beryllium
 Polyamide

-20°C to +60 °C (-4 to 140°F)

UL 94 HB

Drawing

Measurements are shown in millimeters.
 Multiply by 0.03937 to convert to inches.



* Please consider derating graph on page 80.



Test Jacks 2 mm System

Type

MBU 1

2mm panel mount mini test jack, nickel plated brass, spring loaded with solder terminal. max. installation wall thickness 8mm.



MBU 2

2mm mini metal test jack, tin plated brass, spring loaded with PCB soldering terminal. Fits MST3, MVL 2 and MST201.



Pin Diameter

2 mm

2 mm

PART NO. / Housing color

930312000

931337000

Technical Data

Contact Type	spring-loaded jack Ø 2 mm
Connection Type	solder terminal
Voltage Rating	30 VAC / 60 VDC
Measurement Category (IEC61010)	CAT I
Current Rating*	6 A
Contact Resistance	6 mOhm
Mounting Type	screw thread M5

Material Specifications

Jack Body	nickel plated brass
Contact Spring	tin plated copper-beryllium
Housing	-

Environmental Conditions

Temperature Range	-20°C to +60 °C (-4 to 140°F)
-------------------	-------------------------------

Flamability Rating

Housing	-
---------	---

Contact Type	spring-loaded jack Ø 2 mm
Connection Type	solder terminal
Voltage Rating	30 VAC / 60 VDC
Measurement Category (IEC61010)	CAT I
Current Rating*	6 A
Contact Resistance	6 mOhm
Mounting Type	screw

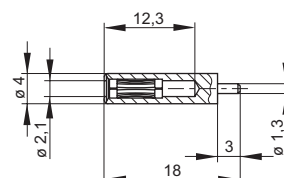
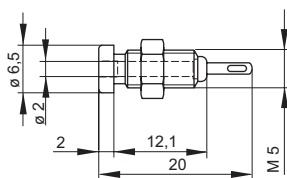
Jack Body	tin plated brass
Contact Spring	gold plated copper-beryllium
Housing	-

Temperature Range	-20°C to +60 °C (-4 to 140°F)
-------------------	-------------------------------

Housing	-
---------	---

Drawing

Measurements are shown in millimeters.
Multiply by 0.03937 to convert to inches.



* Please consider derating graph on page 80.

Test Jacks 2 mm System



Type

MPB 1

2mm mini test jack, dimensions according to DIN41649. Suitable for testing PCB boards during operation.

Pin Diameter

2 mm

PART NO. / Housing color

● 930224100

● 930224101



MPK 1

2mm insulated panel mount binding post with cross hole, gold plated Copper-Beryllium contact spring, tin plated brass thread bold with solder terminal. max. panel thickness 8mm

2 mm

● 930268100

● 930268101

Technical Data

Contact Type	spring-loaded jack Ø 2 mm
Connection Type	solder terminal
Voltage Rating	30 VAC / 60 VDC
Measurement Category (IEC61010)	CAT I
Current Rating*	6 A
Contact Resistance	6 mOhm
Mounting Type	PCB

Material Specifications

Jack Body	-
Contact Spring	tin plated bronze
Housing	PC

Environmental Conditions

Temperature Range	-20°C to +60 °C (-4 to 140°F)
-------------------	-------------------------------

Flamability Rating

Housing	UL 94 HB
---------	----------

Contact Type	spring-loaded jack Ø 2 mm, cross hole Ø 2 mm
Connection Type	solder terminal
Voltage Rating	30 VAC / 60 VDC
Measurement Category (IEC61010)	CAT I
Current Rating*	6 A
Contact Resistance	6 mOhm
Mounting Type	screw thread M3

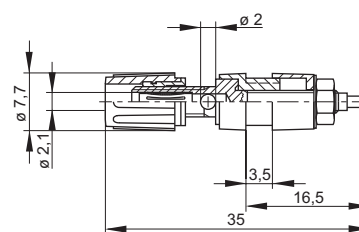
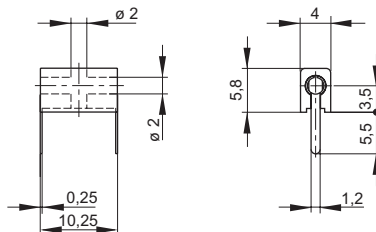
Jack Body	gold plated copper-beryllium
Contact Spring	-
Housing	Polyamide

Temperature Range	-20°C to +60 °C (-4 to 140°F)
-------------------	-------------------------------

Housing	UL 94 V-2
---------	-----------

Drawing

Measurements are shown in millimeters.
Multiply by 0.03937 to convert to inches.



* Please consider derating graph on page 80.



Test Jacks 2 mm System



Type



MSEB 2600 G M3 Au
2mm panel mount safety test jack, gold plated brass with M3 thread and solder terminal. max. installation wall thickness 8mm.



MSEB 2610 F2.8 Au
2mm panel mount safety test jack, gold plated brass with flat 2.8x0.8mm DIN46244 terminal. max. installation wall thickness 8mm.



MSEB 2630 S1.9 Au
2mm panel mount safety test jack, gold plated brass with 1.9mm solder pin terminal. max. installation wall thickness 8mm.

Pin Diameter
PART NO. / Housing color

- 2 mm
- 975454700
 - 975454701
 - 975454702
 - 975454703
 - 975454704
 - 975454705
 - 975454706
 - 975454707
 - 975454709

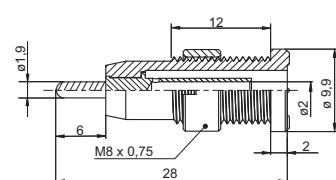
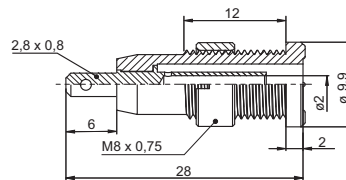
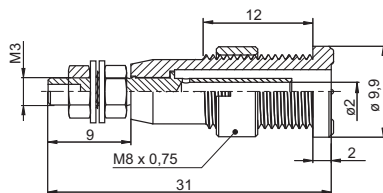
- 2 mm
- 975455700
 - 975455701
 - 975455702
 - 975455703
 - 975455704
 - 975455705
 - 975455706
 - 975455707
 - 975455709

- 2 mm
- 975459700
 - 975459701
 - 975459702
 - 975459703
 - 975459704
 - 975459705
 - 975459706
 - 975459707
 - 975459709

Technical Data	
Contact Type	jack Ø 2 mm
Connection Type	M3 thread, solder terminal
Voltage Rating	AC/DC 1000V
Measurement Category (IEC61010)	CAT III
Current Rating*	10 A
Contact Resistance	5 mOhm
Mounting Type	screw thread M8
Material Specifications	
Jack Body	gold plated brass
Contact Spring	-
Housing	Polyamide
Environmental Conditions	
Temperature Range	-15°C to +70°C (5 to 158°F)
Flamability Rating	
Housing	UL 94 V-2

Drawing

Measurements are shown in millimeters.
Multiply by 0.03937 to convert to inches.



* Please consider derating graph on page 80.

Test Jacks 4 mm System



Type

KUN 30 / KUN 30 Au

4mm Adapter, nickel/ gold plated brass with solder terminal max 2.5mm². Flexible, shatter-proof insulation sleeve

Pin Diameter

4 mm

PART NO. / Housing color

Nickel Plated	Gold Plated
● 931804100	● 931804700
● 931804101	● 931804701
● 931804102	● 931804702
● 931804103	● 931804703
● 931804104	● 931804704
○ 931804107 nickel	○ 931804707 gold



PB 4

4mm test jack, dimensions according to DIN41649. Suitable for testing PCB boards during operation.

4 mm

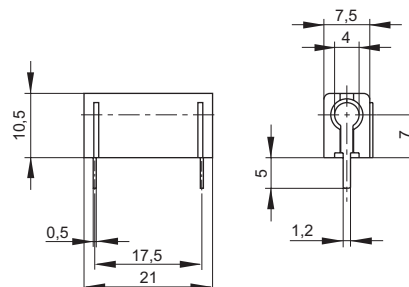
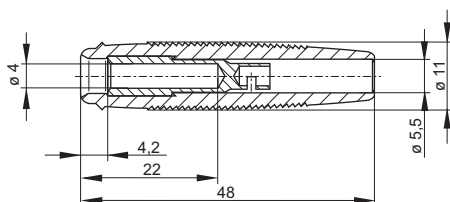
● 973582100
● 973582101

Technical Data

Contact Type	jack Ø 4 mm	jack Ø 4 mm
Connection Type	solder terminal (max. 2.5mm ²)	solder
Voltage Rating	30 VAC / 60 VDC	30 VAC / 60 VDC
Measurement Category (IEC61010)	CAT I	CAT I
Current Rating*	16 A	16 A
Contact Resistance	3 mOhm	5 mOhm
Mounting Type	-	PCB
Material Specifications		
Jack Body	nickel plated brass gold plated brass	tin plated brass
Contact Spring	-	-
Housing	PVC-P	PC
Environmental Conditions		
Temperature Range	-25°C to +70 °C (-13 to 158°F)	-25°C to +70 °C (-13 to 158°F)
Flamability Rating		
Housing	-	UL 94 HB

Drawing

Measurements are shown in millimeters.
Multiply by 0.03937 to convert to inches.



* Please consider derating graph on page 80.



Test Jacks 4 mm System

Type

KD 10

4mm Insulated Adapter, nickel plated brass, for two 4mm plugs

KUN 10

4mm Insulated Adapter, tin plated brass jack and screw terminal max 1.5mm²

Pin Diameter

4 mm

4 mm

PART NO. / Housing color

● 930109100
● 930109101

● 930189100
● 930189101

Technical Data

Contact Type	jack Ø 4 mm
Connection Type	jack (Ø 4 mm)
Voltage Rating	30 VAC / 60 VDC
Measurement Category (IEC61010)	CAT I
Current Rating*	10 A
Contact Resistance	5 mOhm
Mounting Type	-

Material Specifications

Jack Body	nickel plated brass
Contact Spring	-
Housing	PS

Environmental Conditions

Temperature Range	-25°C to +70 °C (-13 to 158°F)
-------------------	--------------------------------

Flamability Rating

Housing	UL 94 HB
---------	----------

jack Ø 4 mm
screw terminal max. 1.5mm ²
30 VAC / 60 VDC
CAT I
16 A
3 mOhm
-

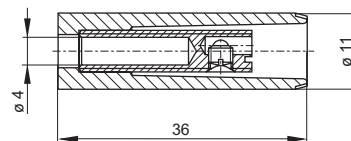
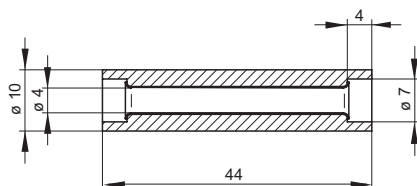
tin plated brass
-
PS

-25°C to +70 °C (-13 to 158°F)

UL 94 HB

Drawing

Measurements are shown in millimeters.
Multiply by 0.03937 to convert to inches.



* Please consider derating graph on page 80.

Test Jacks 4 mm System



Type **BO 10**
4mm panel mount test jack, nickel plated brass, M6 thread screw terminal. panel thickness 1.5-8mm

Pin Diameter 4 mm

PART NO. / Housing color **930160000**



BU 10 / BU 10 Au
4mm panel mount test jack, nickel/gold plated brass, M6 thread screw/ solder terminal. max. panel thickness 11mm

4 mm

930147000
(Nickel plated)
930147700
(Gold plated)

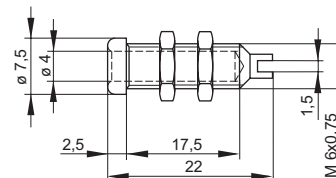
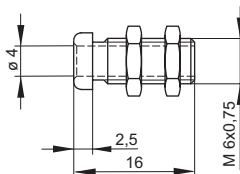
Technical Data

Contact Type	jack Ø 4 mm
Connection Type	M6 thread
Voltage Rating	30 VAC / 60 VDC
Measurement Category (IEC61010)	CAT I
Current Rating*	16 A
Contact Resistance	5 mOhm
Mounting Type	screw thread M6
Material Specifications	
Jack Body	nickel plated brass
Contact Spring	-
Housing	-
Environmental Conditions	
Temperature Range	-25°C to +70 °C (-13 to 158°F)
Flamability Rating	
Housing	-

Contact Type	jack Ø 4 mm
Connection Type	M6 thread, solder terminal
Voltage Rating	30 VAC / 60 VDC
Measurement Category (IEC61010)	CAT I
Current Rating*	16 A
Contact Resistance	5 mOhm
Mounting Type	screw thread M6
Material Specifications	
Jack Body	nickel / gold plated brass
Contact Spring	-
Housing	-
Environmental Conditions	
Temperature Range	-25°C to +70 °C (-13 to 158°F)
Flamability Rating	
Housing	-

Drawing

Measurements are shown in millimeters.
Multiply by 0.03937 to convert to inches.



* Please consider derating graph on page 80.



Test Jacks 4 mm System

Type

BU 20

4mm panel mount test jack, nickel plated brass, M6 thread screw/ solder terminal. max. panel thickness 13.5mm



BIL 20 / BIL 20 Au

4mm panel mount test jack, tin/ gold plated brass, M6 thread screw/ solder terminal, max. panel thickness 2mm

Pin Diameter

4 mm

PART NO. / Housing color

930177000

4 mm

Nickel Plated

- 930176100
- 930176101
- 930176102
- 930176103
- 930176104
- 930176105
- 930176106
- 930176107
- 930176109

Gold Plated

- 930176700
- 930176701
- 930176702
- 930176703
- 930176704
- 930176705
- 930176706
- 930176707
- 930176709

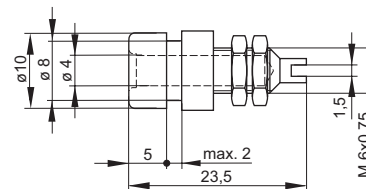
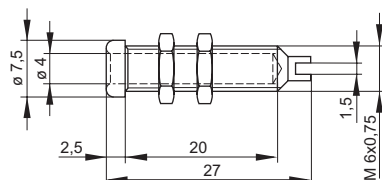
Technical Data

Contact Type	jack Ø 4 mm
Connection Type	M6 thread, solder terminal
Voltage Rating	30 VAC / 60 VDC
Measurement Category (IEC61010)	CAT I
Current Rating*	16 A
Contact Resistance	5 mOhm
Mounting Type	screw thread M6
Material Specifications	
Jack Body	nickel plated brass
Contact Spring	nickel
Housing	-
Environmental Conditions	
Temperature Range	-25°C to +70 °C (-13 to 158°F)
Flamability Rating	
Housing	-

Contact Type	jack Ø 4 mm
Connection Type	M6 thread, solder terminal
Voltage Rating	30 VAC / 60 VDC
Measurement Category (IEC61010)	CAT I
Current Rating*	32 A
Contact Resistance	5 mOhm
Mounting Type	screw thread M6
Material Specifications	
Jack Body	tin / gold plated brass
Contact Spring	-
Housing	Polyamide
Environmental Conditions	
Temperature Range	-25°C to +70 °C (-13 to 158°F)
Flamability Rating	
Housing	UL 94 V-2

Drawing

Measurements are shown in millimeters. Multiply by 0.03937 to convert to inches.



* Please consider derating graph on page 80.

Test Jacks 4 mm System



Type

BIL 30 / BIL 30 Au

4mm panel mount test jack, tin/ gold plated brass, M6 thread screw/ solder terminal, max. panel thickness 4mm

Pin Diameter

4 mm

PART NO. / Housing color

Nickel Plated	Gold Plated
● 930166100	● 930166700
● 930166101	● 930166701
● 930166102	● 930166702
● 930166103	● 930166703
● 930166104	● 930166704
● 930166105	● 930166705
● 930166106	● 930166706
● 930166107	● 930166707
● 930166109	● 930166709



BUG 10 / BUG 10 Au

4mm panel mount test jack, tin/ gold plated brass, M6 thread screw/ solder terminal, max. panel thickness 8mm

4 mm

Nickel Plated	Gold Plated
● 930175100	● 930175700
● 930175101	● 930175701
● 930175102	● 930175702
● 930175103	● 930175703
● 930175104	● 930175704
○ 930175107	○ 930175707

Technical Data

Contact Type	jack Ø 4 mm
Connection Type	M6 thread, solder terminal
Voltage Rating	30 VAC / 60 VDC
Measurement Category (IEC61010)	CAT I
Current Rating*	32 A
Contact Resistance	5 mOhm
Mounting Type	screw thread M6

Material Specifications

Jack Body	tin / gold plated brass
Contact Spring	-
Housing	Polyamide

Environmental Conditions

Temperature Range	-25°C to +85 °C (-13 to 185°F)
-------------------	--------------------------------

Flamability Rating

Housing	UL 94 V-2
---------	-----------

jack Ø 4 mm

Connection Type	M6 thread, solder terminal
Voltage Rating	30 VAC / 60 VDC
Measurement Category (IEC61010)	CAT I
Current Rating*	16 A
Contact Resistance	5 mOhm
Mounting Type	screw thread M6

tin / gold plated brass

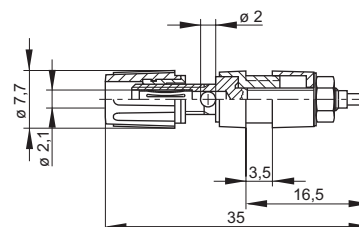
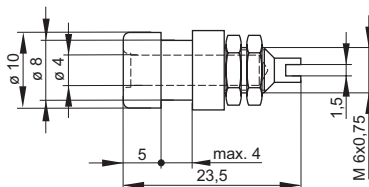
-
Polyamide

-25°C to +85 °C (-13 to 185°F)

UL 94 V-2

Drawing

Measurements are shown in millimeters.
Multiply by 0.03937 to convert to inches.



* Please consider derating graph on page 80.



Test Jacks 4 mm System

Type

PK 110

4mm insulated panel mount binding post with 2mm cross hole, nickel plated brass M4 thread terminal.

PKI 110

4mm insulated panel mount binding post with 2mm cross hole, nickel plated brass, M4 thread terminal, max. panel thickness 3.5mm.

Pin Diameter

4 mm

4 mm

PART NO. / Housing color

● 931713100
● 931713101

● 931714100
● 931714101
● 931714102
● 931714103
● 931714104
● 931714188

Technical Data

Contact Type	jack Ø 4 mm, cross hole Ø 2 mm
Connection Type	M4 thread terminal
Voltage Rating	30 VAC / 60 VDC
Measurement Category (IEC61010)	CAT I
Current Rating*	35 A
Contact Resistance	2 mOhm
Mounting Type	screw thread M4

Material Specifications

Jack Body	nickel plated brass
Contact Spring	-
Housing	Polyamide

Environmental Conditions

Temperature Range	-25°C to +100 °C (-13 to 212°F)
-------------------	---------------------------------

Flamability Rating

Housing	UL 94 V-2
---------	-----------

jack Ø 4 mm, cross hole Ø 2 mm

Connection Type	M4 thread terminal
Voltage Rating	30 VAC / 60 VDC
Measurement Category (IEC61010)	CAT I
Current Rating*	35 A
Contact Resistance	2 mOhm
Mounting Type	screw thread M4

nickel plated brass

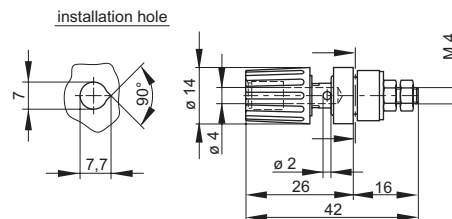
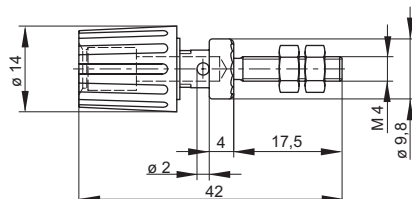
-
Polyamide

-25°C to +100 °C (-13 to 212°F)

UL 94 V-2

Drawing

Measurements are shown in millimeters.
Multiply by 0.03937 to convert to inches.



* Please consider derating graph on page 80.

Test Jacks 4 mm System



Type **PKI 100**
4mm insulated panel mount binding post with 2mm cross hole, nickel plated brass, M4 thread terminal, max. panel thickness 3.5mm.

PKI 10 A / PKI 10 A Au
4mm insulated panel mount binding post with 2mm cross hole, nickel/ gold plated brass, M4 thread terminal, max. panel thickness 2mm

Pin Diameter 4 mm

4 mm

PART NO. / Housing color

- 930757100
- 930757101
- 930757102
- 930757103
- 930757104
- 930757188

Nickel Plated **Gold Plated**

- 930103100 ● 930103700
- 930103101 ● 930103701
- 930103102 ● 930103702
- 930103103 ● 930103703
- 930103104 ● 930103704
- 930103188 ● 930103788

Technical Data

Contact Type jack Ø 4 mm, cross hole Ø 2 mm
 Connection Type M4 thread terminal
 Voltage Rating 30 VAC / 60 VDC
 Measurement Category (IEC61010) CAT I
 Current Rating* 32 A
 Contact Resistance 2 mOhm
 Mounting Type screw thread M4

Material Specifications

Jack Body nickel plated brass
 Contact Spring -
 Housing Polyamide

Environmental Conditions

Temperature Range -25°C to +100 °C (-13 to 212°F)

Flamability Rating

Housing UL 94 V-2

Contact Type jack Ø 4 mm, cross hole Ø 2 mm
 Connection Type M 4 thread terminal
 Voltage Rating 30 VAC / 60 VDC
 Measurement Category (IEC61010) CAT I
 Current Rating* 35 A
 Contact Resistance 2 mOhm
 Mounting Type screw thread M4

nickel plated brass | gold plated brass

-

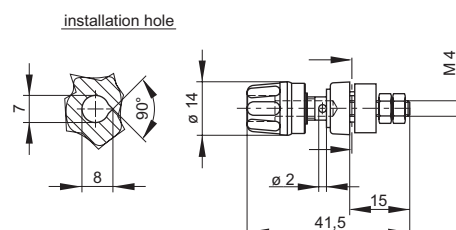
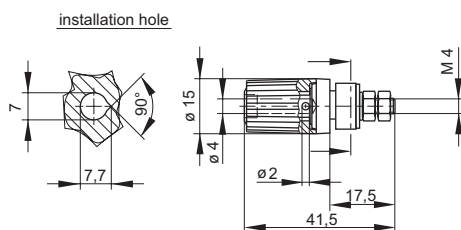
PF

-25°C to +100 °C (-13 to 212°F)

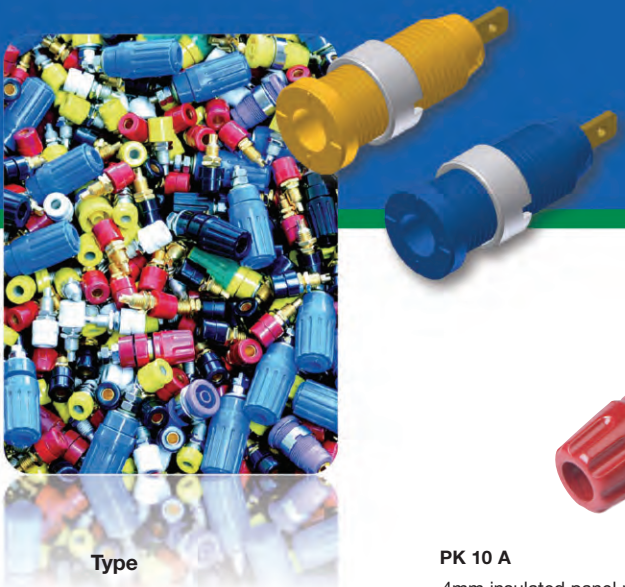
-

Drawing

Measurements are shown in millimeters.
 Multiply by 0.03937 to convert to inches.



* Please consider derating graph on page 80.



Test Jacks 4 mm System

Type



PK 10 A

4mm insulated panel mount binding post with 2mm cross hole, nickel plated brass, M4 thread terminal



PKN 10 B

4mm insulated panel mount binding post with 2.6mm cross hole, nickel plated brass, M6 thread terminal

Pin Diameter

4 mm

4 mm

PART NO. / Housing color

- 930099100
- 930099101
- 930099102
- 930099103
- 930099104
- 930099188

- 930117100
- 930117101

Technical Data

Contact Type jack Ø 4 mm, cross hole Ø 2 mm
 Connection Type M 4 thread terminal
 Voltage Rating 30 VAC / 60 VDC
 Measurement Category (IEC61010) CAT I
 Current Rating* 16 A
 Contact Resistance 2 mOhm
 Mounting Type screw thread M4

Material Specifications

Jack Body nickel plated brass
 Contact Spring nickel
 Housing PF

Environmental Conditions

Temperature Range -25°C to +100 °C (-13 to 212°F)

Flamability Rating

Housing -

jack Ø 4 mm, cross hole Ø 2,6 mm
 M6 thread, solder terminal
 30 VAC / 60 VDC
 CAT I
 63 A
 2 mOhm
 screw thread M6

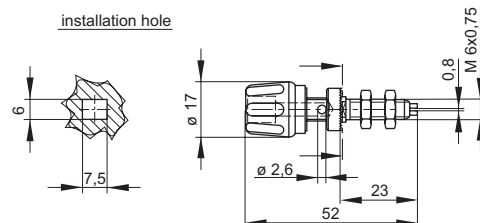
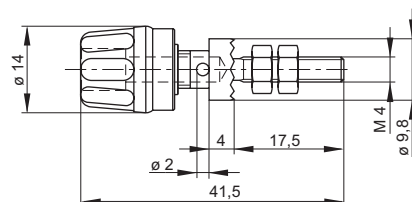
brass
 nickel plated nickel
 PF

-25°C to +100 °C (-13 to 212°F)

UL 94 HB

Drawing

Measurements are shown in millimeters.
 Multiply by 0.03937 to convert to inches.



* Please consider derating graph on page 80.

Test Jacks 4 mm System



Type

PKNI 10 B

4mm insulated panel mount binding post with 2.6mm cross hole, nickel plated brass, M6 thread/ solder terminal, max. panel thickness 3.5mm

Pin Diameter

4 mm

PART NO. / Housing color

● 930136100

● 930136101



PKNI 20 B

4mm insulated panel mount binding post with 2.6mm cross hole, nickel plated brass, M6 thread/ solder terminal, max. panel thickness 3.5mm

4 mm

● 930144100

● 930144101

Technical Data

Contact Type jack Ø 4 mm, cross hole Ø 2.6 mm
 Connection Type M6 thread, solder terminal
 Voltage Rating 30 VAC / 60 VDC
 Measurement Category (IEC61010) CAT I
 Current Rating* 63 A
 Contact Resistance 2 mOhm
 Mounting Type screw thread M6

Material Specifications

Jack Body nickel plated brass
 Contact Spring -
 Housing PF

Environmental Conditions

Temperature Range -25°C to +100 °C (-13 to 212°F)

Flamability Rating

Housing UL 94 HB

Contact Type jack Ø 4 mm, cross hole Ø 2.6 mm
 Connection Type M6 thread, solder terminal
 Voltage Rating 30 VAC / 60 VDC
 Measurement Category (IEC61010) CAT I
 Current Rating* 63 A
 Contact Resistance 2 mOhm
 Mounting Type screw thread M6

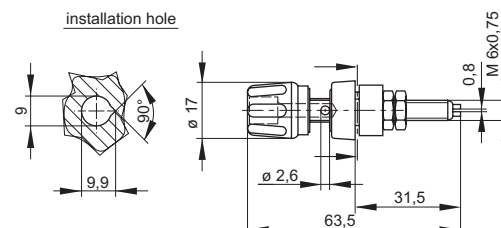
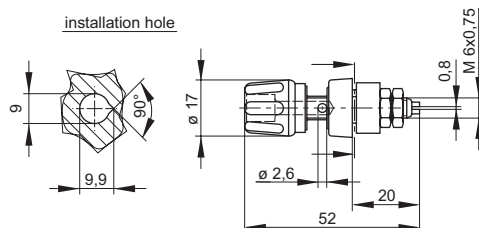
Jack Body nickel plated brass
 Contact Spring -
 Housing PF

Temperature Range -25°C to +100 °C (-13 to 212°F)

UL 94 HB

Drawing

Measurements are shown in millimeters.
 Multiply by 0.03937 to convert to inches.



* Please consider derating graph on page 80.



Test Jacks 4 mm System

Type



KUN S

4mm Safety adapter, nickel plated brass with screw terminal 0.5-1.5mm², IEC61010 1000V system



SEB 2600 G M4

4mm panel mount safety Jack, touch proof, gold plated brass with M4 thread/ solder terminal, max. panel thickness 6mm

Pin Diameter
PART NO. / Housing color

- 4 mm
- 934096100
 - 934096101
 - 934096102
 - 934096103
 - 934096104

- 4 mm
- 972354100
 - 972354101
 - 972354102
 - 972354103
 - 972354104
 - 972354105
 - 972354106
 - 972354107
 - 972354109
 - 972354188

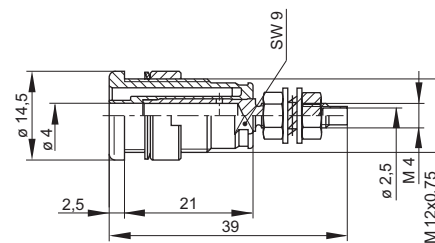
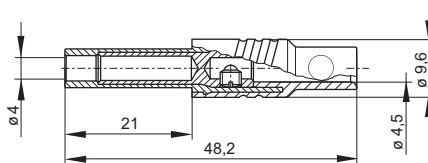
Technical Data

Contact Type	jack Ø 4 mm
Connection Type	screw terminal max. 1.5mm ²
Voltage Rating	AC/DC 1000 V
Measurement Category (IEC61010)	CAT III
Current Rating*	24 A
Contact Resistance	-
Mounting Type	-
Material Specifications	
Jack Body	nickel plated brass
Contact Spring	-
Housing	Polyamide
Environmental Conditions	
Temperature Range	-15°C to +70°C (5 to 158°F)
Flamability Rating	
Housing	UL 94 V-2

Contact Type	jack Ø 4 mm
Connection Type	M4 thread, solder terminal
Voltage Rating	AC/DC 1000 V
Measurement Category (IEC61010)	CAT III
Current Rating*	32 A
Contact Resistance	5 mOhm
Mounting Type	screw thread M12
Material Specifications	
Jack Body	gold plated brass
Contact Spring	-
Housing	Polymide
Environmental Conditions	
Temperature Range	-40°C to +80°C (-40 to 176°F)
Flamability Rating	
Housing	UL 94 V-2

Drawing

Measurements are shown in millimeters.
Multiply by 0.03937 to convert to inches.



* Please consider derating graph on page 80.

Test Jacks 4 mm System



SEB 2610 F4,8
4mm panel mount safety Jack, touch proof, gold plated brass with flat 4.8x0.8mm DIN46244 terminal, max. panel thickness 6mm

Type

Pin Diameter
PART NO. / Housing color

- 4 mm
- 972355100
- 972355101
- 972355102
- 972355103
- 972355104
- 972355105
- 972355106
- 972355107
- 972355109
- 972355188



SEB 2620 F6,3
4mm panel mount safety Jack, touch proof, gold plated brass with flat 6.3x0.8mm DIN46244 terminal, max. panel thickness 6mm

- 4 mm
- 972356100
- 972356101
- 972356102
- 972356103
- 972356104
- 972356105
- 972356106
- 972356107
- 972356109
- 972356188

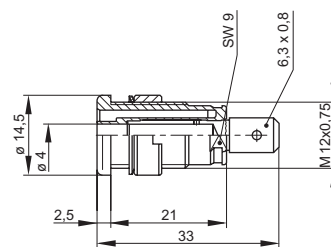
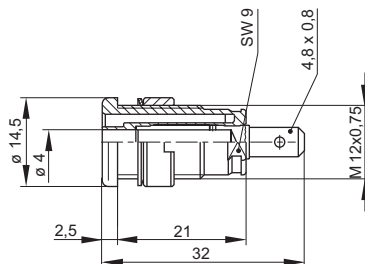
Technical Data

Contact Type	jack Ø 4 mm
Connection Type	flat 4.8 x 0.8 mm tab
Voltage Rating	AC/DC 1000 V
Measurement Category (IEC61010)	CAT III
Current Rating*	25 A
Contact Resistance	5 mOhm
Mounting Type	screw thread M12
Material Specifications	
Jack Body	gold plated brass
Contact Spring	-
Housing	Polyamide
Environmental Conditions	
Temperature Range	-40°C to +80°C (-40 to 176°F)
Flamability Rating	
Housing	UL 94 V-2

Contact Type	jack Ø 4 mm
Connection Type	flat 6.3 x 0.8 mm tab
Voltage Rating	AC/DC 1000 V
Measurement Category (IEC61010)	CAT III
Current Rating*	32 A
Contact Resistance	5 mOhm
Mounting Type	screw thread M12
Material Specifications	
Jack Body	gold plated brass
Contact Spring	-
Housing	Polyamide
Environmental Conditions	
Temperature Range	-40°C to +80°C (-40 to 176°F)
Flamability Rating	
Housing	UL 94 V-2

Drawing

Measurements are shown in millimeters.
Multiply by 0.03937 to convert to inches.



* Please consider derating graph on page 80.



Test Jacks 4 mm System



Type



SEB 2630 S1,9

4mm panel mount safety Jack, touch proof, gold plated brass with soldering pin 1.9mm, max. panel thickness 6mm



MW SEB

Installation tool for 4mm panel mount safety jacks.

Pin Diameter
PART NO. / Housing color

- 4 mm
- 972359100
 - 972359101
 - 972359102
 - 972359103
 - 972359104
 - 972359105
 - 972359106
 - 972359107
 - 972359109
 - 972359188

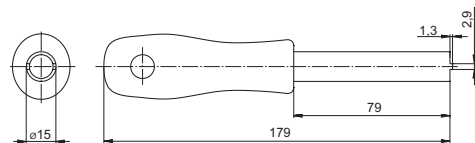
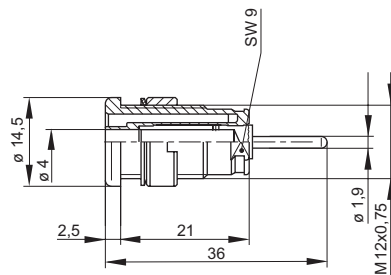
- 4 mm
- 973929000

Technical Data

Contact Type	jack Ø 4 mm	-
Connection Type	solder pin 1.9mm	-
Voltage Rating	AC/DC 1000 V	-
Measurement Category (IEC61010)	CAT III	-
Current Rating*	24 A	-
Contact Resistance	5 mOhm	-
Mounting Type	screw thread M12	-
Material Specifications		
Jack Body	gold plated brass	-
Contact Spring	-	-
Housing	Polyamide	-
Environmental Conditions		
Temperature Range	-40°C to +80°C (-40 to 176°F)	-
Flamability Rating		
Housing	UL 94 V-2	-

Drawing

Measurements are shown in millimeters.
Multiply by 0.03937 to convert to inches.



* Please consider derating graph on page 80.

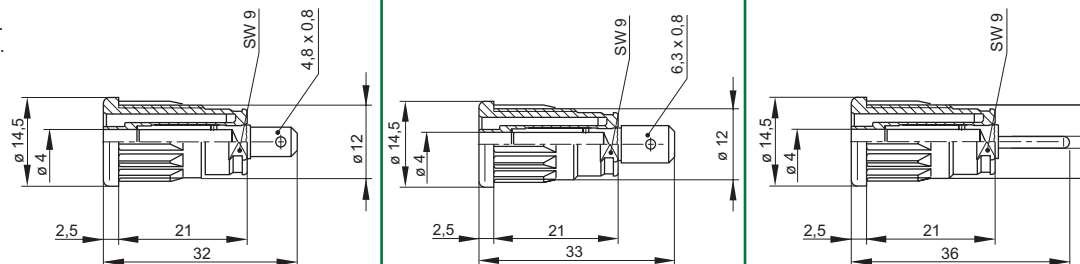
Test Jacks 4 mm System

Type	SEP 2610 F4,8	SEP 2620 F6,3	SEP 2630 S1,9
			
	CE	CE	CE
	Safety press-in socket, 4 mm diameter, contact-protected, with 4.8 x 0.8 tab connector complying with DIN 46 244, gold-plated brass. For rapid installation into switch panels with wall thicknesses between 1-10 mm. Installation hole: 12.2 +/- 0.1 mm diameter. Entry chamfer: 0.5 x 45 degree.	Safety press-in socket, 4 mm diameter, contact-protected, with 6.3 x 0.8 tab connector complying with DIN 46244, gold-plated brass. For rapid installation into switch panels with wall thicknesses between 1-10 mm. Installation hole: 12.2 +/- 0.1 mm diameter. Entry chamfer: 0.5 x 45 degree.	Gold-plated brass safety press-in socket, 4 mm diameter, contact-protected, with 1.9 mm soldering spike. For installation into switch panels with wall thicknesses between 1 mm and 10 mm. Installation hole: 12.2 +/- 0.1 mm diameter. Entry chamfer: 0.5 x 45 degree.
Pin Diameter	2 mm	2 mm	2 mm
PART NO. / Housing color	<ul style="list-style-type: none"> ● 972361100 ● 972361101 ● 972361102 ● 972361103 ● 972361104 ● 972361188 	<ul style="list-style-type: none"> ● 972362100 ● 972362101 ● 972362102 ● 972362103 ● 972362104 ● 972362188 	<ul style="list-style-type: none"> ● 972363100 ● 972363101 ● 972363102 ● 972363103 ● 972363104 ● 972363188

Technical Data		jack Ø 4 mm	jack Ø 4 mm	jack Ø 4 mm
Contact Type	jack Ø 4 mm	jack Ø 4 mm	jack Ø 4 mm	jack Ø 4 mm
Connection Type	flat 4.8 x 0.8 mm tab	flat 6.3 x 0.8 mm tab	flat 6.3 x 0.8 mm tab	solder pin 1.9mm
Voltage Rating	AC/DC 1000 V	AC/DC 1000 V	AC/DC 1000 V	AC/DC 1000V
Measurement Category (IEC61010)	CAT III	CAT III	CAT III	CAT III
Current Rating*	24 A	32 A	32 A	24 A
Contact Resistance	5 mOhm	5 mOhm	5 mOhm	5 mOhm
Mounting Type	press in	press in	press in	press in
Material Specifications				
Jack Body	gold plated brass	gold plated brass	gold plated brass	gold plated brass
Contact Spring	-	-	-	-
Housing	PA	PA	PA	PA
Environmental Conditions				
Temperature Range	-40°C to +80°C (-40 to 176°F)	-40°C to +80°C (-40 to 176°F)	-40°C to +80°C (-40 to 176°F)	-40°C to +80°C (-40 to 176°F)
Flamability Rating				
Housing	UL 94 V-2	UL 94 V-2	UL 94 V-2	UL 94 V-2

Drawing

Measurements are shown in millimeters.
Multiply by 0.03937 to convert to inches.



* Please consider derating graph on page 80.